



# Conveying of Finished Plastic Components

**Fully Automated Pneumatic Solutions  
for Conveying of Finished Plastic Components  
in a Seamless Production Flow**



# Pick-Up From Octabins or Boxes

Automate the movement of finished plastic components from your warehouse to assembly line or packaging area.



Finished components are conveyed from stocking area to the production or packaging areas by means of the Component Pick-up Unit - CPU.

## PNEUMATIC CONVEYING

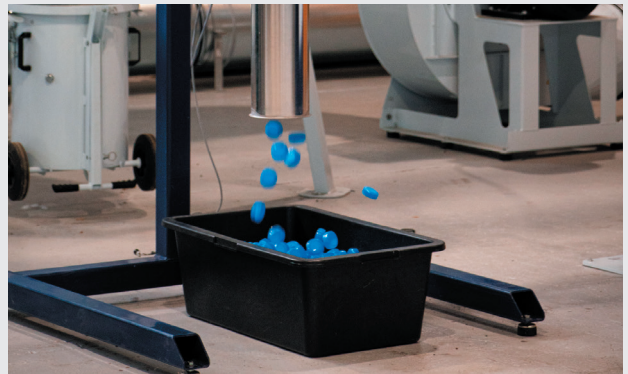
Say goodbye to space-consuming, maintenance-heavy, and operator-requiring mechanical systems! This pneumatic conveying solution is efficient, easy to install and fits everywhere. The closed system heightens safety for workers.

Longer conveying distances become possible, while production space is freed up. In addition, the pneumatic technology is energy-efficient and customized to reduce energy costs per tonne.

The system gently picks up components in bulk from the warehouse and conveys them to your production or packaging area. The solution integrates the CPU with a blower and the CVL which delivers your components in batches.

The system can be configured with specifically developed stainless steel or polyurethane pipes, depending on your specific production issues. We can deliver pipe extension up to 100 meters.

This integrated solution can handle a wide range of plastic components. We thoroughly test your components in our Technology Centre to guarantee conveying without damage to your components or clogging issues.



The finished components may be gently conveyed from storage to be delivered in apportioned volumes for packaging.

### Example of Conveying Performance

|                     |                           |
|---------------------|---------------------------|
| Conveying distance: | 30 m                      |
| Components:         | Caps Ø25 x 20, 2.6 g each |
| Capacity            | 20,000 pcs/hour           |



# Batch Feeding

We offer multiple solutions depending on your production flow and setup.

The Kongskilde Component Vacuum Loader (CVL) streamlines the transfer in batches of finished plastic components within plastic processing. A new era in efficiency for finished products!

The CVL makes conveying and batching of components a fast and efficient operation.

The Vacuum Loader is designed as an integral part of Kongskilde Industries' conveying systems for batch delivery at final assembly line of a wide variety of finished plastic components on a large scale, such as caps for milk, water, soft & sports drinks, and other similar products.



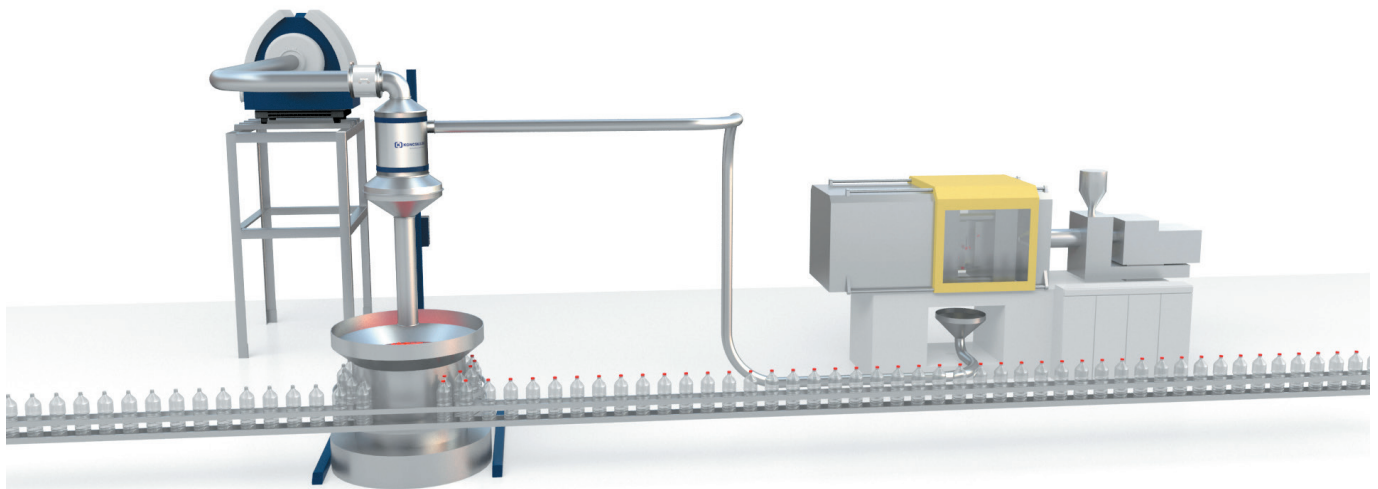
CVL 700

## From injection moulding, to warehouse, assembly, or packaging line

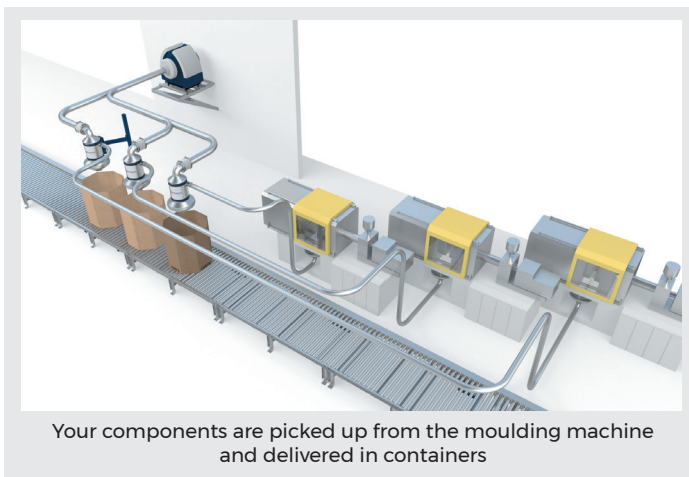
It is all up to you! You decide how many components to release per batch - and how many batches per hour you wish to convey by air through a pipe & hose system.

The CVL utilizes the frequency-controlled blower, the *MultiAir® FC*, coupled with a vacuum gate for material

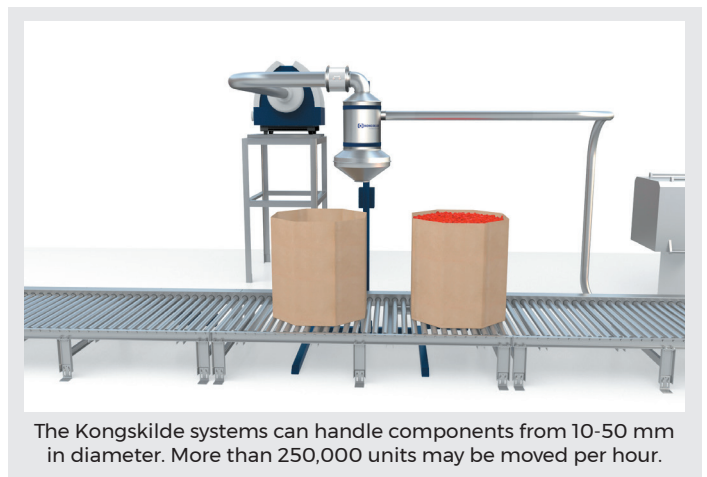
collection, separation, and discharge. Manufacturers can now move their finished products in specified batches to descramblers, gaylords, boxes, silos, etc. with a high degree of both speed and reliability.



Batch feeding to the filling area - from your injection moulding machine to the assembly line.



Your components are picked up from the moulding machine and delivered in containers



The Kongskilde systems can handle components from 10-50 mm in diameter. More than 250,000 units may be moved per hour.



# Benefits

You can enjoy many benefits of choosing a pneumatic solution to move finished plastic products.

- ▶ Get **full control** of components fed into your production
- ▶ **Automate** manual processes
- ▶ Get a flexible and **gentle** conveying system
- ▶ Conveying lines can go both **horizontally** and **vertically**
- ▶ Place the blower anywhere and **free up floor space**
- ▶ Make **easy changes** to the system layout and reuse system components
- ▶ Bring your maintenance requirements to a **minimum**

## SYSTEM COMPONENTS

CPU - Component Pick-Up Unit for bin emptying

CVL - Component Vacuum Loaders for delivery and separation of components and air

A pipe system which consists of pipes, bends, and hoses

A MultiAir® blower which generates air flow into the system

All components are modular, standard components

## Test Your Own Components and Discover the Power of Air



Our Technology Centre in Denmark will perform real-life tests on your production materials.

**Get in touch with your local Kongskilde office to get started.**



**Kongskilde Industries A/S**

Tel.: +45 72 17 60 50

industry@kongskilde-industries.com

www.kongskilde-industries.com

**K KONGSKILDE**

Air solutions / your success