

Multiair FC 1100/1150/1200/1250/1300

Specially designed for the paper, packaging and plastic industry the flexible high pressure Kongskilde Multiair FC 1000 blower is an excellent choice for conveying of raw material, process waste and finished goods.

By utilizing the latest AC Drive technology in combination with Kongskildes high efficient well proven rotor design the new Multiair FC 1000 series adds unique flexibility to industrial pneumatic applications offering the users to optimize the application performance to avoid unnecessary power consumption.

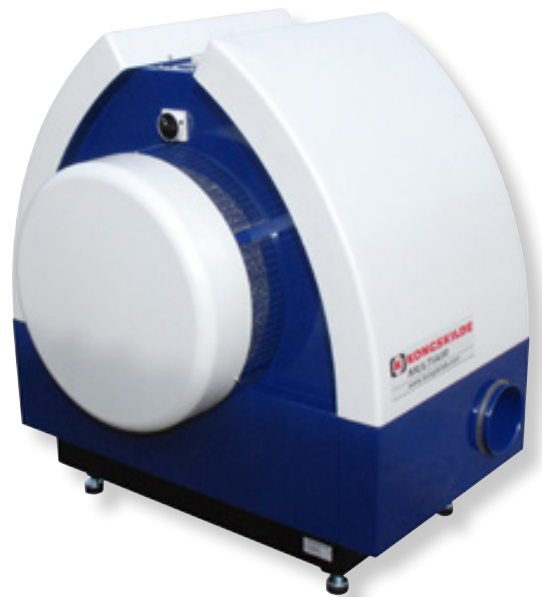
The Multiair FC 1000 models are based on high efficient centrifugal blower, direct driven and build to an acoustic housing for state of the art noise reduction. The acoustic housing is designed for indoor as well as outdoor installation.

AC Drive technology enables the blower to run on demand up to 4800rpm directly coupled to the electric motor. With the unique controls and build in functions the operator can easily adjust the performance to the exact need of the application. Furthermore the blower is equipped with a PID control which enables the

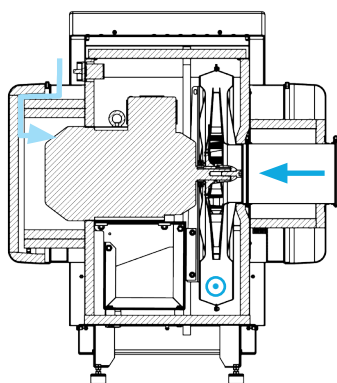
blower to maintain a constant flow or pressure in a given application by adding the optional Kongskilde flow control unit or pressure control unit.

The compact, simple and effective design have minimized the requirement for maintenance which basically only calls for cleaning.

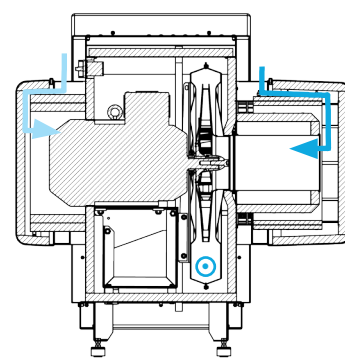
Kongskilde can deliver the Multiair FC 1000 series in 2 different versions depending on the application requirement. The T-model is a pressure blower where the application can be connected to the pressure side of the blower. For the S-model both the vacuum and pressure side can be connected to the application.



S-model



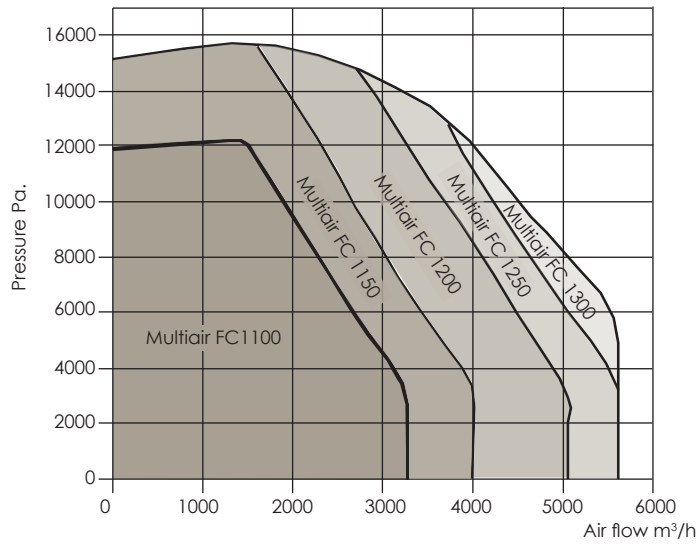
T-model



Technical data

Multiair type	1100	1150	1200	1250	1300	
AC Drive output max. (kW)	7,5	11	15	18,5	22	
Power supply	400 - 480 V, 50 or 60 Hz					
Min. fuse rating	20A	25A	35A	50A	50A	
Air flow m³/h	m³/h	Pressure Pa				
	1800	10000	15800	15800	15800	15800
	2800	5000	9000	14000	14800	14800
	4000	-	-	8400	10800	12000
Weight, kg	279	330	330	339	339	
Heating of air at 1800 m³/h in C°	10	14	20	20	20	
Multiair FC models	Blower performance is adjusted manual on panel. Optional air flow or pressure control can be used for control of blower performance					
Declaration	CE/UL/CUL					
Noise level	≈ 72-76 dB (A) (Application dependent)					

Performance for Multiair FC 1000 series

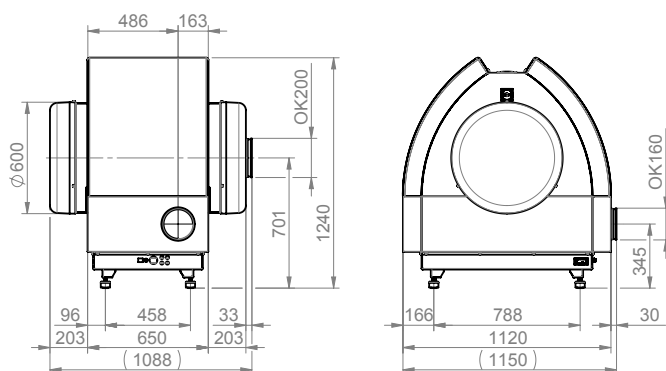


Optional equipment

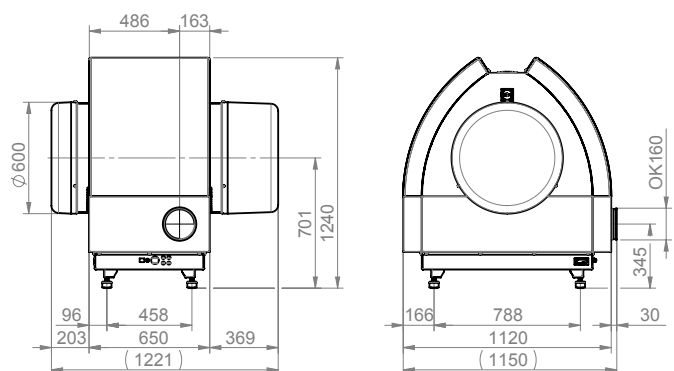
- To adjust the blower performance on distance up to 30m from the Multiair a remote unit is available. The remote unit has to be wired to the panel on the Multiair.
- Pressure control unit will enable the blower to hold a constant pressure independent of air flow.
- Air flow control unit will enable the blower to hold a constant air flow independent of the pressure.

Dimensions

S-model



T-model



Kongskilde Industries A/S

Tel. +45 33 68 37 00

mail@kongskilde.com

www.kongskilde.com